



Crown 410

865053

POWER FEATURES

- 11.4 kwh stainless steel tube burner system

COOKING SYSTEM

- 4155 sq. cm. total cooking surface including porcelain coated warming rack
- 2864 sq. cm. primary cooking surface
- Flav-R-Cast™ Iron grids
- Stainless steel Flav-R-Wave™ cooking system
- Four stainless steel tube burners
- Linear Flow valves with 180° precision control
- Deluxe electronic ignition system
- Deluxe premium thermometer

DESIGN AND STYLING

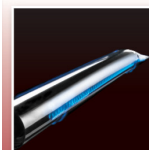
- Black porcelain hood panel with stylish cast aluminium end caps
- Therma-Cast™ aluminium cookbox
- Fold down side shelves with integrated tool hooks
- Stainless steel control panel
- Black powder coat frame and front panel
- Heavy-duty locking swivel casters

DURABILITY

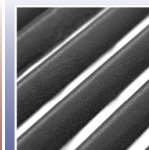
- Quality epoxy paint finish
- Stainless steel spider guards
- Rust resistant zinc coated steel components

WARRANTY

- 10 years on Therma-Cast™ aluminum oven
- 5 years on stainless steel burner system
- 2 years on stainless steel Flav-R-Wave™ cooking system
- 2 years on remaining parts and paint



Stainless Steel Tube Burner System



Flav-R-Cast™ Iron Grids



Stainless Steel Flav-R-Wave™ Cooking System



Deluxe Electronic Ignition System



Stylish Steel Side Shelves